



Beaufort County Public Works Stormwater Infrastructure Project Summary

Project Summary: Browns Island Road

Project #: 2010-087

Completed: Dec-09

Narrative Description of Project:
Cleaned out 473 L.F. of outfall ditch.

Material Cost, Rental Equipment Summary, and Labor

Material	Unit	Cost/Unit	Qty	Cost
Pin Flag	each	\$0.06	5.0	\$0.30
Gas	gallon	\$2.40	5.0	\$12.00
Diesel	gallon	\$2.41	23.0	\$55.43
Labor	hours		34.0	\$1,178.04
Total Cost of Materials, Rental Equip., and Labor				\$1,245.77

Note: Labor cost includes the employee's salary plus fringe benefits.

Equipment Cost

Item	Asset	Cost/Hour	Hrs.	Cost
Komatsu Mini Excavator	23000	\$18.65	3.0	\$55.95
Dump Truck	23105	\$16.68	2.0	\$33.36
Pickup Trucks		\$4.17	11.0	\$45.87
Total Equipment Cost				\$135.18

Cost/hour excludes fuel cost.

Total Cost: \$1,380.95

Site Photographs

Before

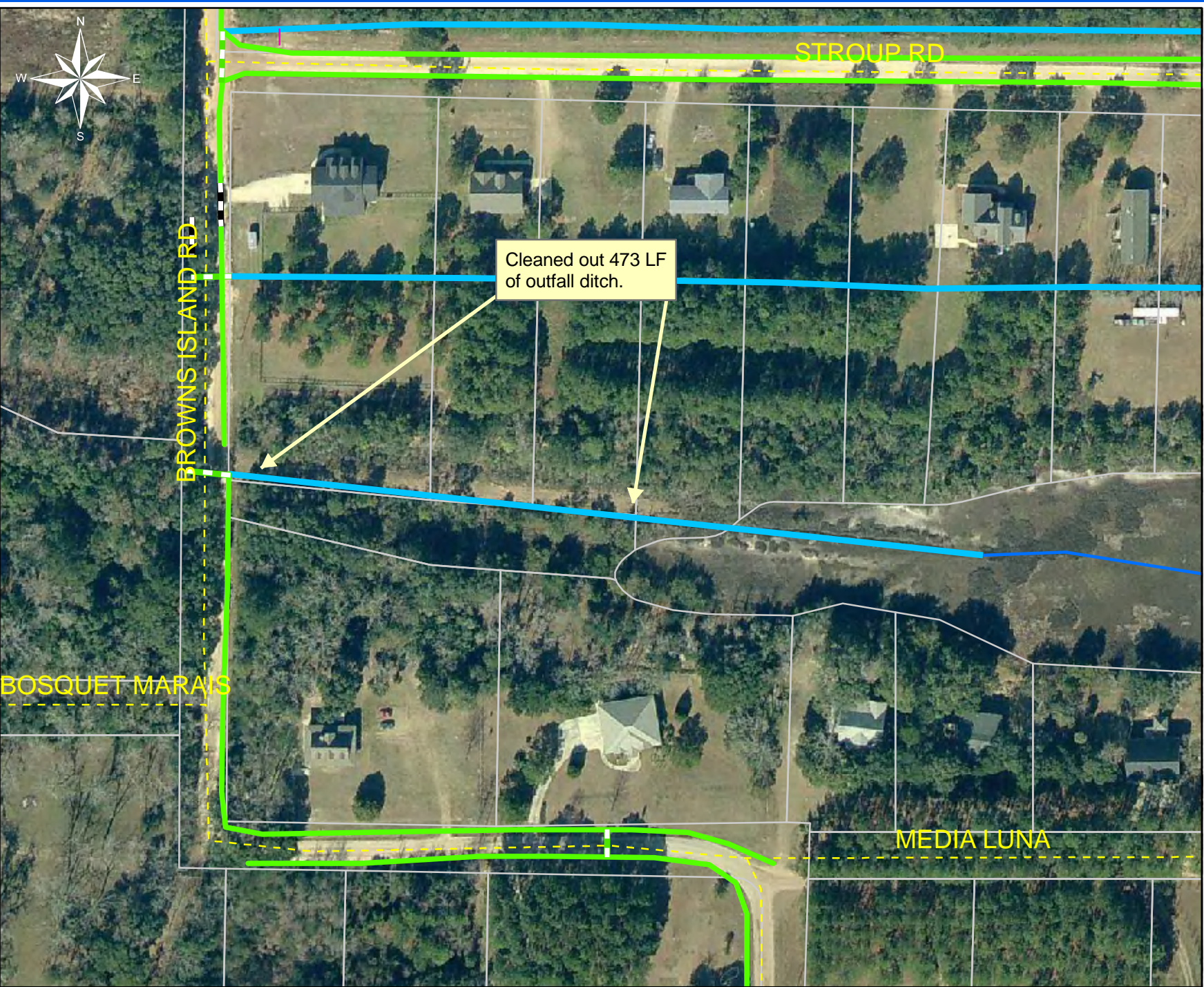


During



After





Project: Browns
Island Road

Activity: Drainage
Maintenance

Project #:
2010-087

Township:
Sheldon

Completed:
December 2009

Legend

Drainage Type

- River
- Stream
- Outfall
- Lateral
- Roadside
- Roadside Pipe
- Crossline
- D/W
- Access
- Piped
- Bleeder



1 inch equals 140.87 feet